

Dallas/Fort Worth Chapter

ISCEBS

Welcome from our 2021 OFFICERS AND BOARD



PRESIDENT
Kathy Kwasniak
CEBS – TrueRisk Advisors



**VICE PRESIDENT &
PROGRAMS
COMMITTEE CO-CHAIR**
Ursula Poley
CEBS



SECRETARY
Barbara Koehrer
CEBS – Southwest Airlines



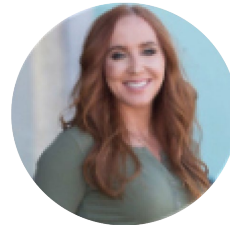
TREASURER
Rachel Swinnen
CEBS – Marsh &
McLennan Agency LLC



**PROGRAMS COMMITTEE
CO-CHAIR**
Tangula Morrison
CEBS



**MEMBERSHIP
COMMITTEE CHAIR**
Jackie Couture
CEBS – McGriff, Seibels
& Williams



**SPONSORSHIP CHAIR &
PROGRAMS
COMMITTEE CO-CHAIR**
Gentry Lynn
CEBS – Healthcare
Bluebook



TECHNOLOGY CHAIR
Adrian Robison
CEBS – Mercer



PAST CO-PRESIDENT
Mike Kohl
CEBS – SimplePay Health



PAST CO-PRESIDENT
Lynette Yates
CEBS – Half Price Books

Dallas/Fort Worth Chapter
(ISCEBS

Thank You to our Sponsors





Today's Speaker & Topic

Jeff McKissack, President

Defense By Design

Onsite & Offsite Safety Concerns

ONSITE & OFFSITE SAFETY CONCERNS

Reducing Risks & Liability



Copyright © 2018

A Sobering Reminder

*“Technology is not going to save us.
Our computers, our tools, our
machines are not enough.*

*We have to rely on our intuition –
our true being.”*

Joseph Campbell



When Was Their Last “*Safety Talk*?”



Best Friend or Worst Enemy?



Contributing Factors Today

- Stress
- Frustration
- Uncertainty
- Change

*Any of which can lead to
“anger.”*



Our Greatest Enemy



*“What happens in the **ER**
can affect your **HR**.
And what happens in the **PD**
can affect your **PR**. ”*

- Jeff McKissack -



Internal Red Flags

- Justification
- Alternatives
- Consequences
- Abilities

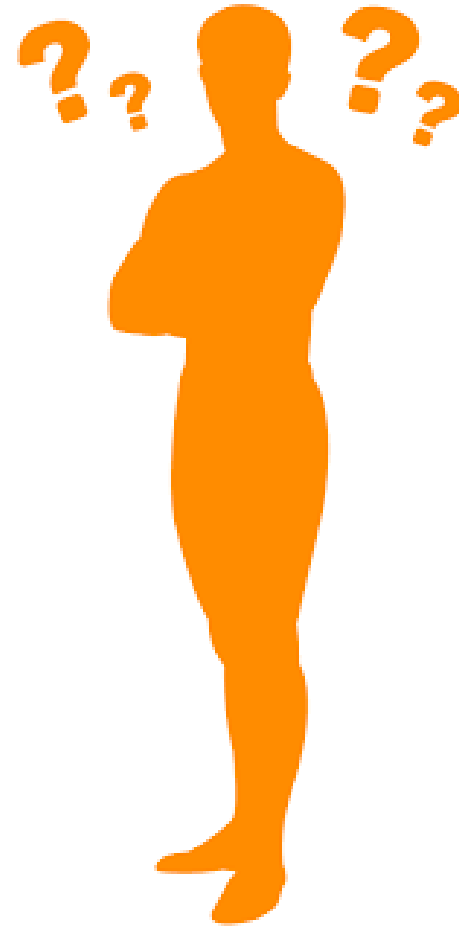
Credit: Gavin De Becker Institute



The Main **External** Dynamic

*“An unknown person is an unpredictable person, and it’s **what you don’t know** that can hurt you.”*

Jeff McKissack



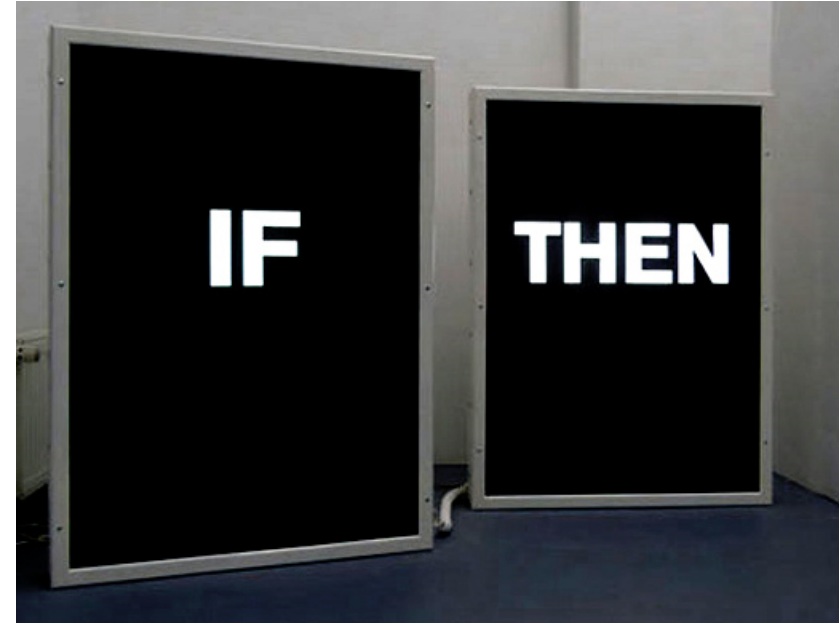
Reverse Engineering The Threat

- **Justification** – take away their sense of being “wronged.” This alone can eliminate the threat.
- **Alternatives** – offer solutions or others who can help.

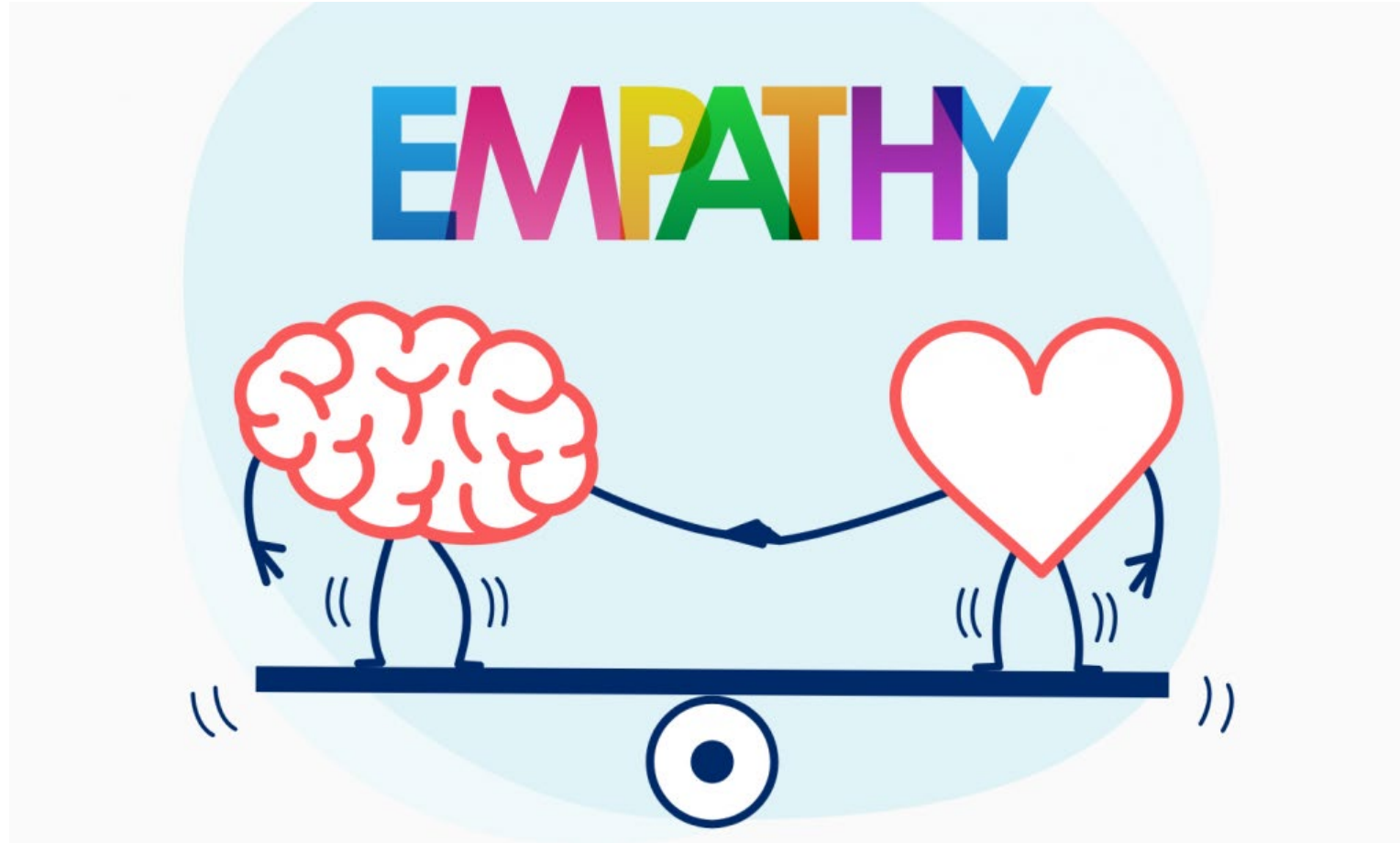


Reverse Engineering The Threat

- **Consequences** – personalize yourself, remind them of impact on their family, etc.
- **Abilities** – if still a potential threat, do not allow them reentry to the facility.



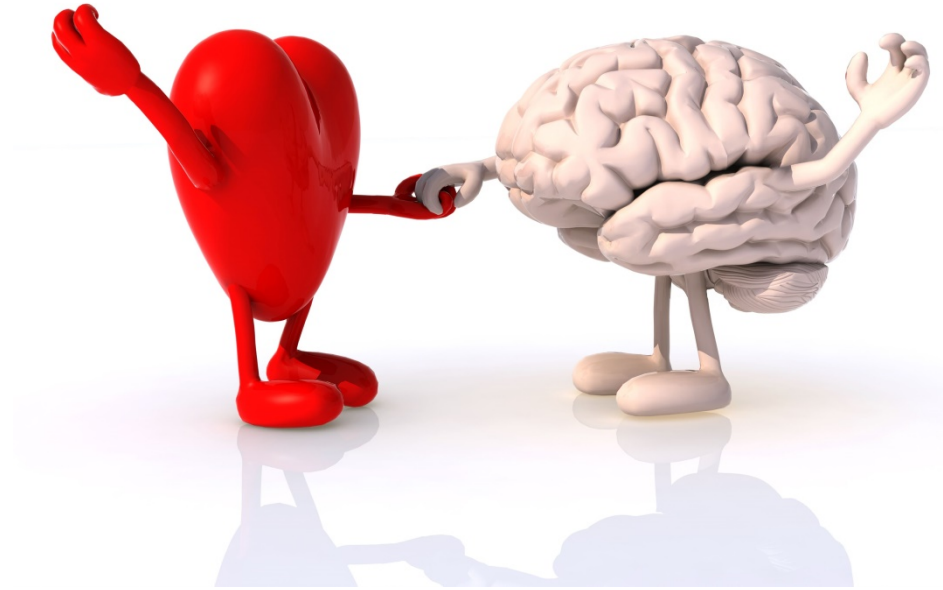
A Tale of Two Approaches



Another **Classic** Approach

- *Feel*
- *Felt*
- *Found*

Sometimes we can learn from
“sales.”



And If All Else Fails...

Remove yourself from the scene, the encounter, the person(s) involved to avoid further escalation.

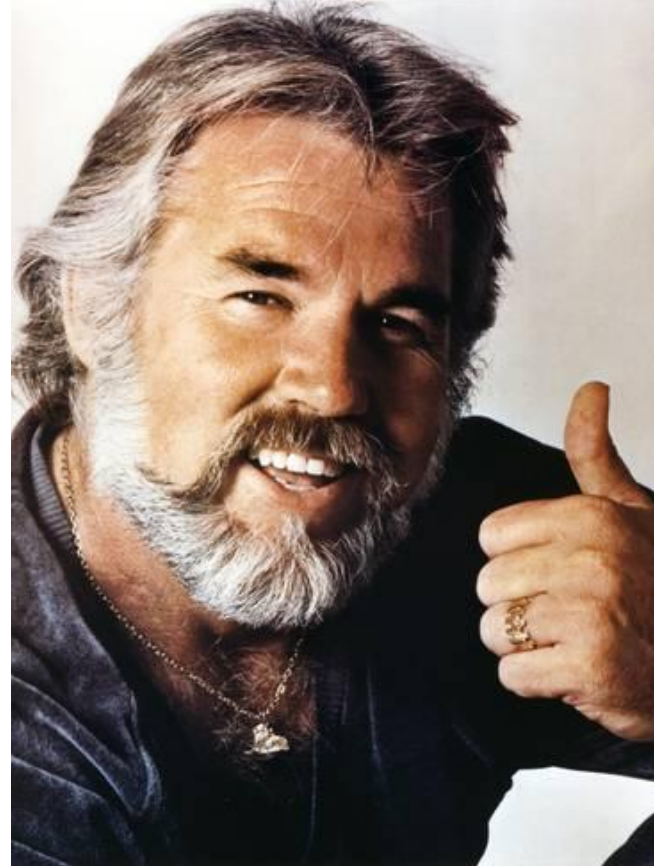
“Tactical Retreats” aren’t just for military use.



“Stand Your Ground” vs. Taking The Higher Ground

There is a time to say, “it’s time for you to leave.” And then there’s a time to say, “it’s time for me to leave.”

Learning to discern that difference is the beginning of wisdom and prevention.



And Finally...



EDUCATION EQUALS PREVENTION

You Can Combine Great **HR** With Great **PR** As Well...

Special Offer for DFW CEBS
Members Through October 31st
DFWCEBS.now.site





Jeff McKissack

DEFENSEBYDESIGN.COM



Dallas/Fort Worth Chapter (ISCEBS) *Reminders*

- October – No Meeting
- November 11 – Recent Trends and Best Practices for Retirement Plan Sponsors
Mechiel Lake, CEBS and Brad Altman with MMA
- December 9 – Members Only Holiday Luncheon – In Person! Venue TBD
- Like and Follow our new LinkedIn Page
<https://www.linkedin.com/company/dfw-iscebs-chapter/>
- Become a member! It's easy to join! www.ifebp.org/membership
- Join our 2022 Board! Join a great team, we have a variety of positions available
Email kkwasniak@trueriskadvisors.com

CEBS Compliance

This program qualifies for CEBS Compliance credit
Be recognized for the professional education you complete
to stay up-to-date

30 credits over two calendar years to be compliant

Most credits are self-reported www.ifebp.org/myprofile

Follow the prompts on the orange box to report your credits

